



# Ku'i Na Lono

*Spread the News*

October - December 2020

## HCAP's Hale Kākou Program Helps Family Pay their Rent Bills and Maintain Stable Housing



Mary's family first met HCAP's Leahi District Service Center staff last year to receive assistance from the Low-Income Home Energy Assistance (LIHEAP) Program. Since then, Mary's household has been greatly impacted by the pandemic. She had been laid off from her full-time job due to COVID-19 and her spouse's work hours were drastically decreased. This ill-fated turn of events rocked their household's financial stability. Mary continued to search for employment opportunities, but struggled to make any headway. The string of obstacles deeply frustrated Mary and eventually brought her to a halt in searching for employment.

Mary then reached out to the Leahi District to see if there were any programs that could help. After speaking with the Leahi District Service Center staff, Mary applied to HCAP's Hale Kākou Program, which provides rent, mortgage and utility assistance for those directly affected by COVID-19. The Leahi District staff also took this as an opportunity to enroll Mary into the Nā Lima Hana Employment Core Services Program. Through the Nā Lima Hana Program, Mary will receive employment counseling services, resume building and help in finding job opportunities.

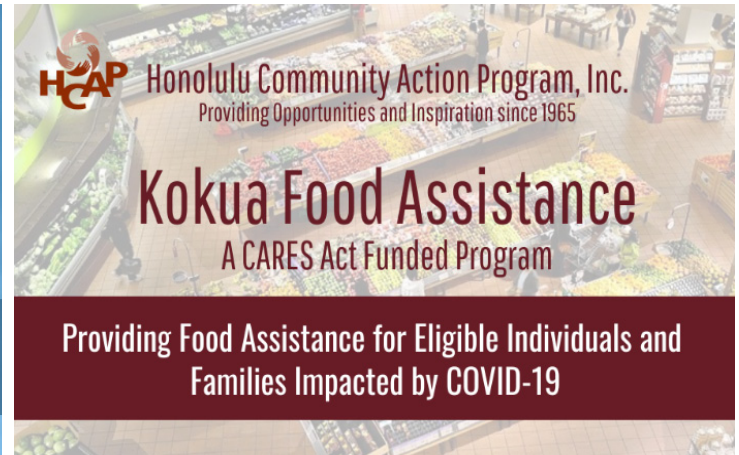
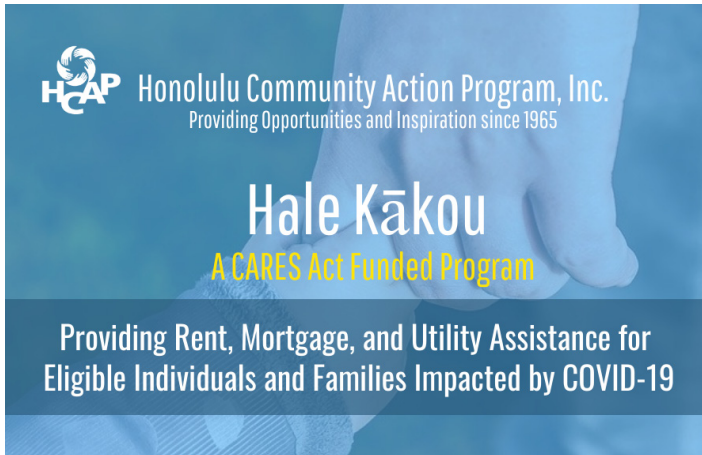
We are excited to share that Mary's application to the Hale Kākou Program was approved! She recently shared with our Leahi staff that their rent bill had been paid. Being able to maintain stable housing and enrolling in the Nā Lima Hana Program has restored hope in Mary. Our staff continue to assist Mary with HCAP resources to help her and her family get back on their feet.

HCAP's Hale Kākou Program, funded through the Community Services Block Grant CARES Act Federal Funds, provides rent, mortgage, and utility assistance for eligible individuals and households impacted by COVID-19. Learn more about the program by visiting: [www.hcapweb.org/hale-kakou/](http://www.hcapweb.org/hale-kakou/)

### In this issue:

- **HCAP Launches Hale Kākou and Kokua Food Assistance Programs in Response to COVID-19 (pg. 2)**
- **Former Kumuhonua Clients are Thriving After Finding Permanent Housing (pg. 3)**
- **Kupuna Independent Life Series Continues During COVID-19 with Drive-by Classroom (pg. 5)**

## HCAP Launches Hale Kākou and Kokua Food Assistance Programs in Response to COVID-19



HCAP is pleased to announce that our agency has launched two new programs in response to COVID-19. Both of these programs are funded through the Community Services Block Grant CARES Act Federal Funds and are designed to directly assist individuals and families who have been impacted by the pandemic.

The first of these program is the Hale Kākou Program, which provides rent, mortgage, and utility assistance for those individuals and families impacted by COVID-19 through loss of employment, reduction of work hours, or other pandemic-related challenges. The purpose of the the program is to provide homelessness prevention for those at imminent risk of homelessness, eviction or foreclosure and energy crisis intervention for those at risk of disconnection of electric, water and/or gas services. Assistance will be provided by direct payment made by HCAP to landlords, prospective landlords and/or utility companies.

HCAP has also launched its new Kokua Food Assistance Program to provide food assistance for eligible individuals and families impacted by COVID-19. The program was designed to address the increasing food insecurity many individuals and families face due to the pandemic. Through the Kokua Food Assistance Program, HCAP will be providing the following services to eligible individuals and families:

- 1) Kokua Grocery Cards: Food assistance (gift cards) for eligible individuals and families.
- 2) Kokua Grocery Boxes: Fresh fruit, vegetables, dairy and protein delivered to homebound kupuna and other vulnerable populations. In order to prepare the Kokua Food Boxes, HCAP partnered with Ham Produce and Seafood to prepare, assemble, and deliver the boxes to HCAP's District Service Center for the distributions. The Kokua Food Boxes included a variety of fruits and vegetables as well as dairy, egg, and protein.
- 3) Kokua Food Pantry: Emergency food assistance for eligible individuals and families. Pantries will be provided at HCAP's District Service Centers and Kumuhonua Transitional Living Center

Please call your nearest HCAP District Service Center or visit our website for more information. Please note that assistance will be provided based on elibigility and availability of funds.

## Former Kumuhonua Residents are Thriving Months After Finding Permanent Housing



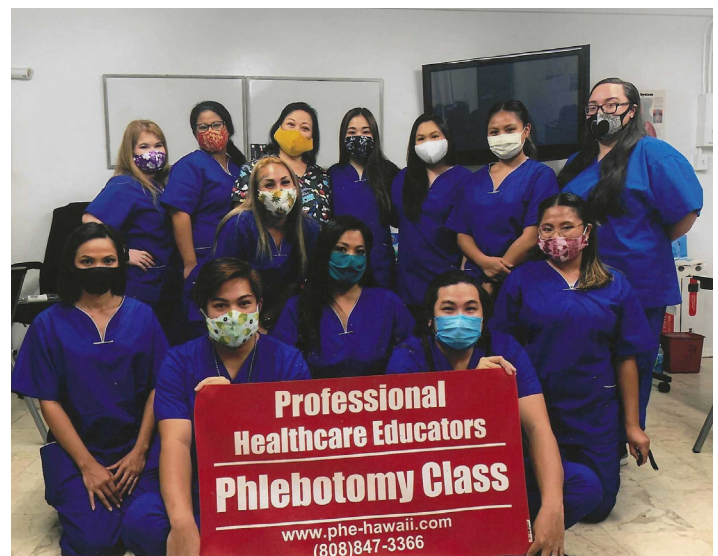
This past summer, we shared the story of Early, Mary and their son Kekoa. Before finding shelter at Kumuhonua Transitional Living Center, the family had been evicted from their home and had become homeless. But thanks to the HCAP's Rapid-Rehousing Program and the Kumuhonua staff, the family was able to secure permanent housing on May 1, 2020.

Six months later, our staff followed-up with Mary, Earl and Kekoa and checked in on their progress and need for assistance.

"It's so wonderful to have your own place. I can finally have my grandkids over," Mary shared with staff. Mary also shared a picture of her and Kekoa with her grandchildren this past Halloween. She told staff that she is so excited to have her own place and is grateful for all the assistance she and her family received from the Rapid Rehousing and Kumuhonua team. It's not always easy for former Kumuhonua residents to sustain permanent housing, but Mary, Earl and Kekoa seem to be thriving in their new place six months after their big move.

## Nā Lima Hana Employment Core Services Program Helps Unemployed Worker Obtain Phlebotomy Training Certification

Edlizer was referred to HCAP by our partner Professional Healthcare Educators (PHE) to see if he would qualify for tuition assistance for the Phlebotomy Training Program. Edlizer was working for the Special Education Center of Hawaii until the center was temporarily closed due to COVID-19. Since being unemployed, Edlizer began looking for employment in a field that was close to his heart. Edlizer graduated with a Bachelor of Science in Nursing in 2014 from the St. Joseph College of Cavite, Inc. in the Philippines and always wanted to pursue a career in the healthcare field since arriving in Hawai'i. After reviewing his eligibility, Edlizer was able to receive tuition assistance through HCAP's Nā Lima Hana Employment Core Services Program to attend Professional Healthcare Educators.



We are excited to share that Edlizer successfully completed his Phlebotomy Training Program and obtained his Certification of Completion. Edlizer's next goal is to obtain a position in the healthcare field using the skills he acquired. He has also updated his resume to reflect his new certification and to use in seeking employment.

## Board of Directors

### 2020-2021 BOARD OFFICERS

Edward Mersereau  
Chair  
Terrence H. Aratani, Esq.  
Vice Chair  
William Shiroma  
Secretary/Treasurer

### 2020-2021 BOARD MEMBERS

#### *Resident Sector*

Kealohilani Kea  
Head Start Policy Council  
Edward Mersereau  
Central District Advisory Council  
Jessica Lee  
Central District Advisory Council  
Pauni Nagaseu-Escue  
Kalihi-Palama District Council  
Anne Chipchase  
Leahi District Advisory Council  
Jodi Johnson  
Leeward District Advisory Council  
Virgil Amoroso  
Windward District Advisory Council

#### *Public Sector*

Frank J. Lopez  
Governor's Representative  
Colleen E. Minami  
Mayor's Representative  
Terrence H. Aratani, Esq.  
Office of Senator Brian T. Taniguchi  
Garrick L.H. Goo, Esq.  
Office of Senator Clarence K. Nishihara  
Blake K. Oshiro, Esq.  
Office of Representative Calvin K.Y. Say  
Rep. Linda Ichiyama, Esq.  
Office of Representative Linda Ichiyama  
Rep. Mark J. Hashem  
Office of Representative Mark J. Hashem

#### *Private Sector*

Roxanne U. Bolden  
Aloha Independent Living Hawaii  
William Shiroma  
Bank of Hawaii  
Manu Anana  
Hawaii Department of Education  
Joanna Markle  
Hawaiian Electric Company  
Samuel Moku  
Hawaii Pacific University  
Donald Aweau  
Kilina'i Consulting  
Elmer K. Kaai  
Native Hawaiian Chamber of Commerce

#### *Executive Director*

Robert N.E. Piper, Esq., MBA

## Head Start Director Grant Kogami is Selected to Join the National Community Action Partnership's Head Start Task Force



We are excited to share that HCAP's Head Start Director, Grant Kogami, has been selected as a member of the National Community Action Partnership's Head Start Task Force. The Head Start Task force will advise NCAP's Board of Directors on actions related to early childhood issues and advocate on behalf of the Community Action Network in order to promote the historical and programmatic synergies that exist between Community Action and the Head Start early childhood education model.

Robert Piper, HCAP Executive Director, states "As our HCAP Head Start Director, Grant ensures that we deliver quality early childhood education and support services to 1,460 Head Start students and 48 Early Head Start students (and their families) for a total of 1,508 students served annually. He enjoys a stellar working relationship and reputation with our region's Head Start office in San Francisco and is active with the Hawaii Head Start Association and other Head Start providers in the Pacific Islands and western states through his work through Region IX. Grant is very willing to help and I believe he will be a valuable asset to all CAAs (and their Head Start Programs) in Region IX."

Congratulations to Grant on this well deserved opportunity! We are proud that one of HCAP's own will be utilizing his knowledge and experience to pave the way for early childhood education in the future! Learn more about the National Community Action Partnership by visiting: [communityactionpartnership.com/](http://communityactionpartnership.com/)

## Kupuna Independent Life Series Continues During COVID-19 With Drive-By Classroom

HCAP's Leeward District Service Center seniors have been participating in a drive-by classroom for the Kupuna Independent Life Series. Every Friday, seniors drive by the Leeward District Service Center to pick-up an education packet, a lunch bento, and available items through the food pantry. Seniors are also provided with fact-based information on COVID-19, which provides important safety precautions for seniors and those with underlying health issues. Their educational packets also include puzzles, simple recipes, and exercises that can be done during the pandemic. When seniors arrive at the Leeward District Service Center, they are asked to stay in their car. Staff members bring education packets and bentos to the cars, take attendance, and provide seniors with any other support they need.



Although the drive-by classroom isn't a replacement for our regular in-person classes filled with health education, socialization, support groups and crafts, seniors are grateful for the brief encounter every Friday. The Kupuna Independent Life Series also continues its wonderful partnership with Hawaii Pacific University's College of Nursing to provide health education and services to our seniors.



Many kupuna from the community have contacted the Leeward District Service Center to sign up for the Spring Semester, which begins at the end of January. Hopefully by then kupuna will be able to return to the classroom, but until then our staff continues to provide support, education, and resources to keep our kupuna healthy, safe, and engaged during this time.

## Employee Anniversaries

Mahalo to our staff who reached these milestones of service this quarter

### 5 Years

Reiko Su'a - Nā Lima Hana Employment Core Program Coordinator

### 20 Years

Maurina Ludwig - Head Start Teacher I

### 15 Years

Ida Kila- Head Start Teacher I

### 30 Years

Jadyanne Lee - Head Start ERSEA Specialist

## Single Mom Impacted by COVID-19 Celebrates Christmas with a Home, Electricity, and Presents Thanks to HCAP Programs

Tiare is a mother of two boys. Before COVID-19, Tiare was working two jobs to make ends meet. But after the pandemic hit the islands, Tiare's hours were cut for her first job and she was laid-off from her second one. She quickly sought help from HCAP's Kalihi-Palama District Service Center to see if she could receive assistance to keep her and her family afloat. In June, Tiare received assistance from HCAP's Low-Income Home Energy Assistance (LIHEAP) Program to pay off bills related to her urgent notice from Hawaiian Electric, preventing any disconnection of service. Later, when HCAP's Hale Kākou Program launched, HCAP was able to assist Tiare with two months of back rent. While helping her with the Hale Kākou paperwork, Kalihi-Palama District staff submitted an application to Adopt a Family for Tiare. We are happy to share that Tiare picked up her presents for her boys! Thanks to HCAP's programs, Tiare's ohana is able to celebrate Christmas with a home, electricity, and presents!



## Mahalo to our Donors and Funders

HCAP would like to thank the following funders. From October 1, 2020 to December 31, 2020, HCAP received funding from the following:

[Atherton Family Foundation](#) - \$10,000 grant award for the Hā Initiative: Creative STEM After-School Program

[Friends of Hawaii Robotics-We Care Grant](#) - \$327 grant award for the Hā Initiative: Creative STEM After-School Program

[Hawaii Community Foundation- Promising Minds Alumni Grant](#)- \$10,000 grant award for the Head Start Program

[Hawaiian Electric](#) - \$10,000 donation to the Honolulu Community Action Program, Inc.

[Hawaii FIRST Robotics](#) - \$400 grant award for the Hā Initiative: Creative STEM After-School Program

[Stantec Consulting Services, Inc.](#) - \$500 donation to the Honolulu Community Action Program, Inc.

### Individual Donors

Justina Acevedo-Cross	Frank Lopez	Susie and Randy Roth
Manu Anana	Jason Louie	Alisha Summers
Terrance Aratani	Colleen Minami	Anne Summers
Roxanne Bolden	Samuel Moku	Kurt Tsue
Warren Haraki	Corinne Murashige	Angela Wong

# Interim Financial Update

Third Quarter FY 2021  
April 1, 2020 - December 30, 2020  
\*Unaudited, Cash Basis

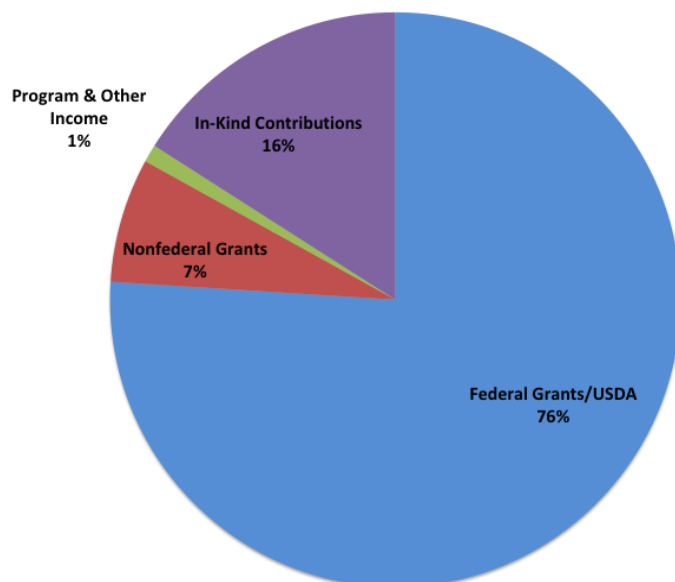
CURRENT PROGRAMS BY FUNDING SOURCE	PROGRAM PERIOD	BUDGET
Atherton Family Foundation	12/01/20-11/30/21	10,000
Community Services Block Grant (CSBG)	10/01/20-09/30/21	3,480,550
CSBG CARES Act Supplemental	03/27/20-09/30/22	2,773,513
Friends of Hawaii Charities	05/01/20-12/31/20	4,000
Friends of Hawaii Robotics	11/01/20-10/31/21	327
Gwenfread Elaine Allen Fund	01/01/20-11/16/20	3,000
Hawaii Bowl Foundation	12/24/19-12/23/20	750
Hawaii Community Foundation - Trauma Informed Care	12/01/20-11/30/21	10,000
Hawaii First Robotics	11/01/20-10/31/21	400
Head Start	04/01/19-03/31/21	14,300,391
Head Start	04/01/20-03/31/21	14,114,161
Head Start CARES Act Supplemental	04/01/20-03/31/21	1,325,242

CURRENT PROGRAMS BY FUNDING SOURCE	PROGRAM PERIOD	BUDGET
Head Start Full-Day Full-Year	04/01/20-03/31/21	1,270,343
Kumuhonua Shelter - DHS	07/01/20-06/30/21	500,000
Kumuhonua Shelter - Program Income	07/01/20-06/30/21	258,500
Kumuhonua Shelter - Roof Renovations	12/01/18-11/30/22	500,000
Low-Income Home Energy Assistance Program (LIHEAP)	10/01/20-09/30/22	228,467
State Office of Community Services-Employment Services	10/01/19-09/30/21	259,880
Rapid Re-Housing	06/15/20-06/14/21	488,493
Temporary Assistance for Needy Families (TANF)	01/01/20-12/31/20	100,000
Weatherization Assistance Program (WAP)	07/01/20-06/30/21	287,010
WAP/LIHEAP	10/01/20-09/30/21	245,854

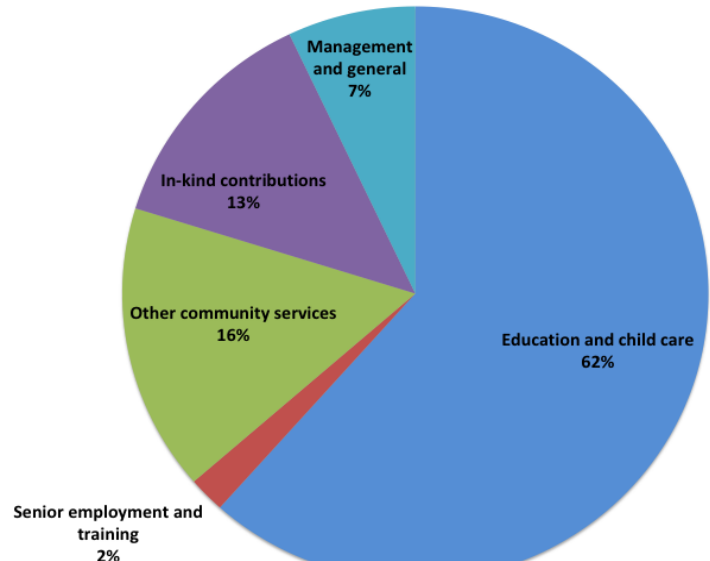
GRANTS & OTHER SUPPORT	YTD
Federal grants/USDA	10,323,429
Nonfederal grants	987,874
Program & Other Income	116,132
In-kind Contributions	2,123,163
<b>Total</b>	<b>13,550,598</b>

EXPENSES	YTD
Program services:	
Education & childcare	9,827,330
Senior employment & training	351,607
Other community services	2,561,862
In-kind contributions	2,123,163
Supporting services:	
Management & general	1,118,493
<b>Total</b>	<b>15,982,455</b>

GRANTS AND OTHER SUPPORT



EXPENSES





## Honolulu Community Action Program, Inc.

Corporate Office

1132 Bishop Street, Suite 100, Honolulu, HI 96813

Tel: (808) 521-4531 Fax: (808) 521-4538 E-mail: [hcp@hcpweb.org](mailto:hcp@hcpweb.org)

### District Service Centers

#### Central

Tel: 488-6834 Fax: 488-7862

99-102 Kalaloa St. Aiea, HI 96701

#### Kalihi-Palama

Tel: 847-0804 Fax: 841-7971

1555 Haka Dr. #2408 Honolulu, HI 96817

#### Leahi

Tel: 732-7755 Fax: 735-6034

1915 Palolo Ave. Honolulu, HI 96816

#### Leeward

Tel: 696-4261 Fax: 696-0169

85-555 Farrington Hwy. Waianae, HI 96792

#### Windward

Tel: 239-5754 Fax: 239-3912

47-232 Waihee Rd. Kaneohe, HI 96744

### Programs

Hā Initiative: Creative STEM After-School Program

Tel: 521-4531 Fax: 521-4538

Na Lima Hana Employment Core Services Program

Tel: 521-4531 Fax: 521-4538

Weatherization Assistance Program (WAP)

Tel: 521-4531 Fax: 521-4538

Kumuhonua Transitional Living Center

Tel: 682-5494 Fax: 682-5495

91-1096 Yorktown St. Kapolei, HI 96707

HCAP Head Start & Early Head Start

Tel: 847-2400 Fax: 847-2302

94-810 Moloalo St, Suite 200 & 210

Waipahu, HI 96797

*Support HCAP by giving a secure donation on-line. Click "donate" below or on our website at*

[www.hcapweb.org](http://www.hcapweb.org)

**Donate**

